

## 6a Gorman Avenue Panania NSW

Flooded with natural light and loaded with quality extras, this brand-new home is unlike anything else on offer in the area.

No expense has been spared when building this home, from the double brick & concrete slab construction to the soaring ceilings, curved feature walls and high-end fixtures throughout, you will be impressed from the moment you enter!

Ideally located close to Schools, Shops, Parks and Transport, this beautiful home is a must see.

Offering:




- Gourmet kitchen with gas cooking, integrated dishwasher and ample storage
- Glamorous butlers' pantry and separate laundry with external access
- Full bathroom located downstairs
- Light filled and open plan living and dining with electric fireplace
- Spacious master bedroom with walk-in robe, stunning ensuite and balcony
- 3 additional bedrooms all with built-in robes
- Stylish main bathroom with separate bath and shower
- Stacking sliding doors allowing for seamless indoor/outdoor entertaining

- Alfresco area with built-in BBQ overlooking the pool and low maintenance yard
- Huge double garage with internal access + additional off-street parking secured by an electric gate
- Loads of extras including ducted A/C, solar electricity and clever storage options throughout
- Land size approx. 304.3sqm
- Approx. 1km to Revesby South Public School
- Approx. 700m to Picnic Point High School
- Approx. 1.5km to Panania Train Station
- Approx. 800m to top Panania Shops

For further information or to arrange your private inspection, contact Theo or Jenny immediately!

Exclusively Listed by Alliance Real Estate.

Disclaimer: We have, in preparing this document, used our best endeavours to ensure that the information contained herein is true and accurate to the best of our knowledge, but accept no responsibility and disclaim all liability in respect of any errors, omissions, inaccuracies or mis-statements contained in this document. Prospective purchasers should make their own enquiries to verify the information contained in this document.

4  3  4 

**Price** : CONTACT AGENT

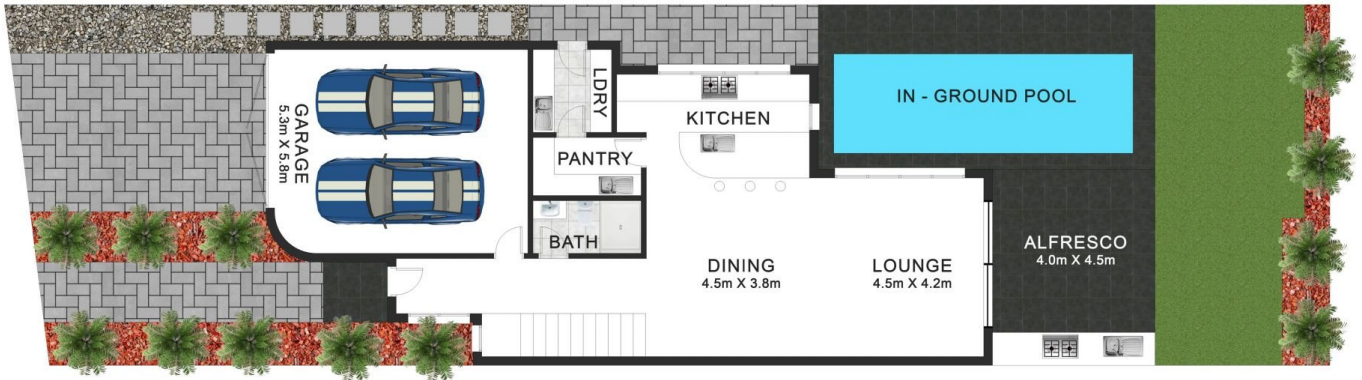
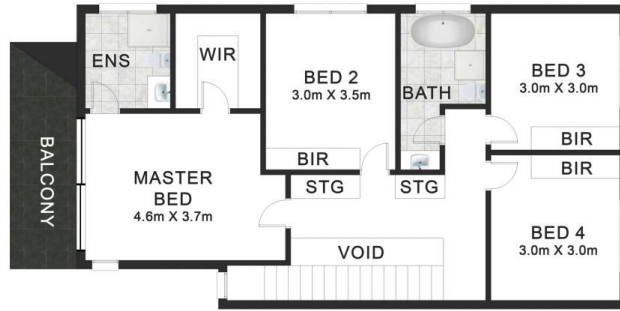
**Land Size** : 304.3 sqm



**Theo Kalinderidis**  
02 8112 8852  
theo@allianceaust.com.au



**Jenny Fisher**  
02 9771 6115  
jenny@allianceaust.com.au



6a Gorman Ave, Panania

All reasonable care was taken in the preparation of this document, however no warranty is given to the accuracy of the information. Dimensions shown are approximate only.